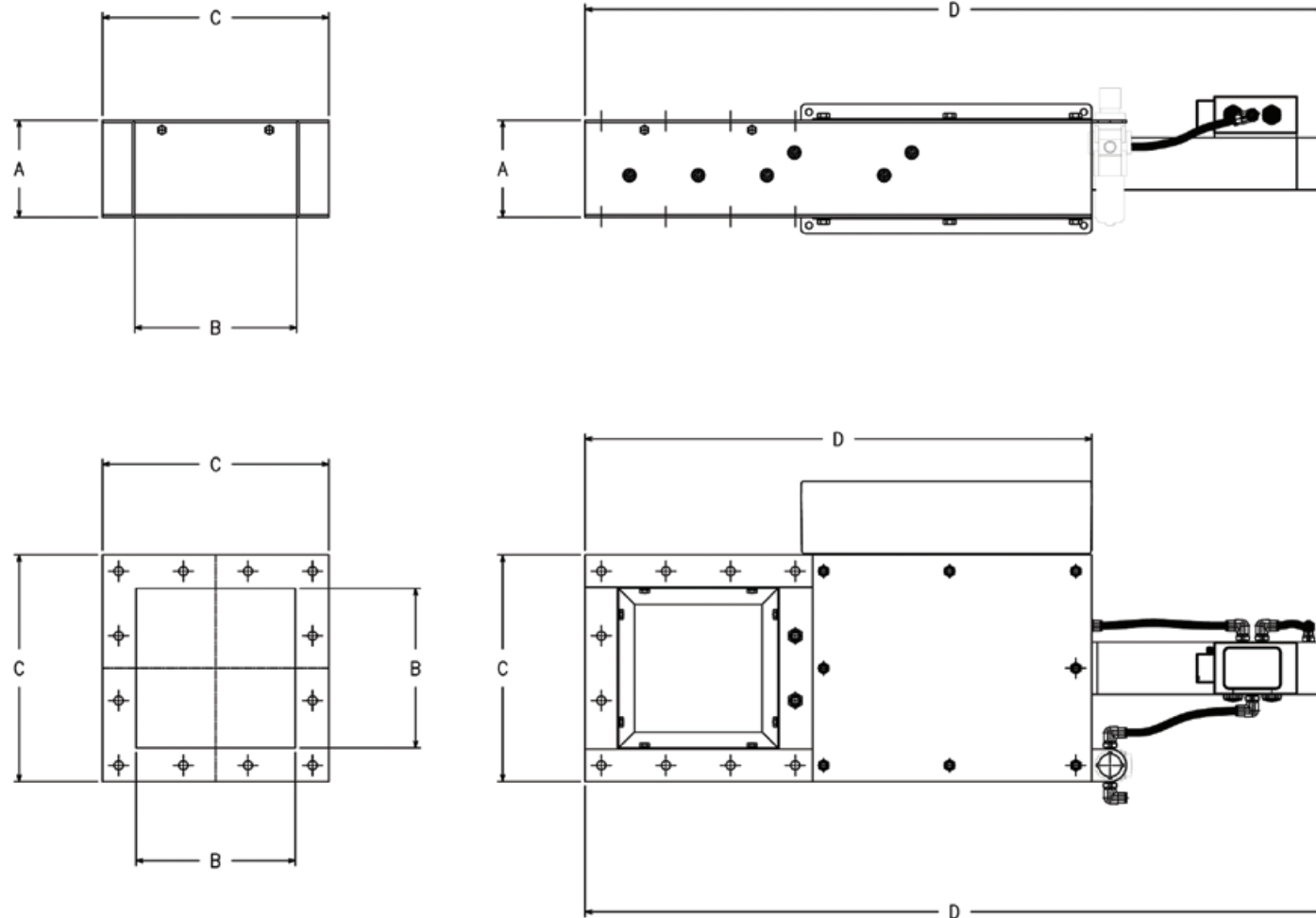


## Technical and Dimensional Data.



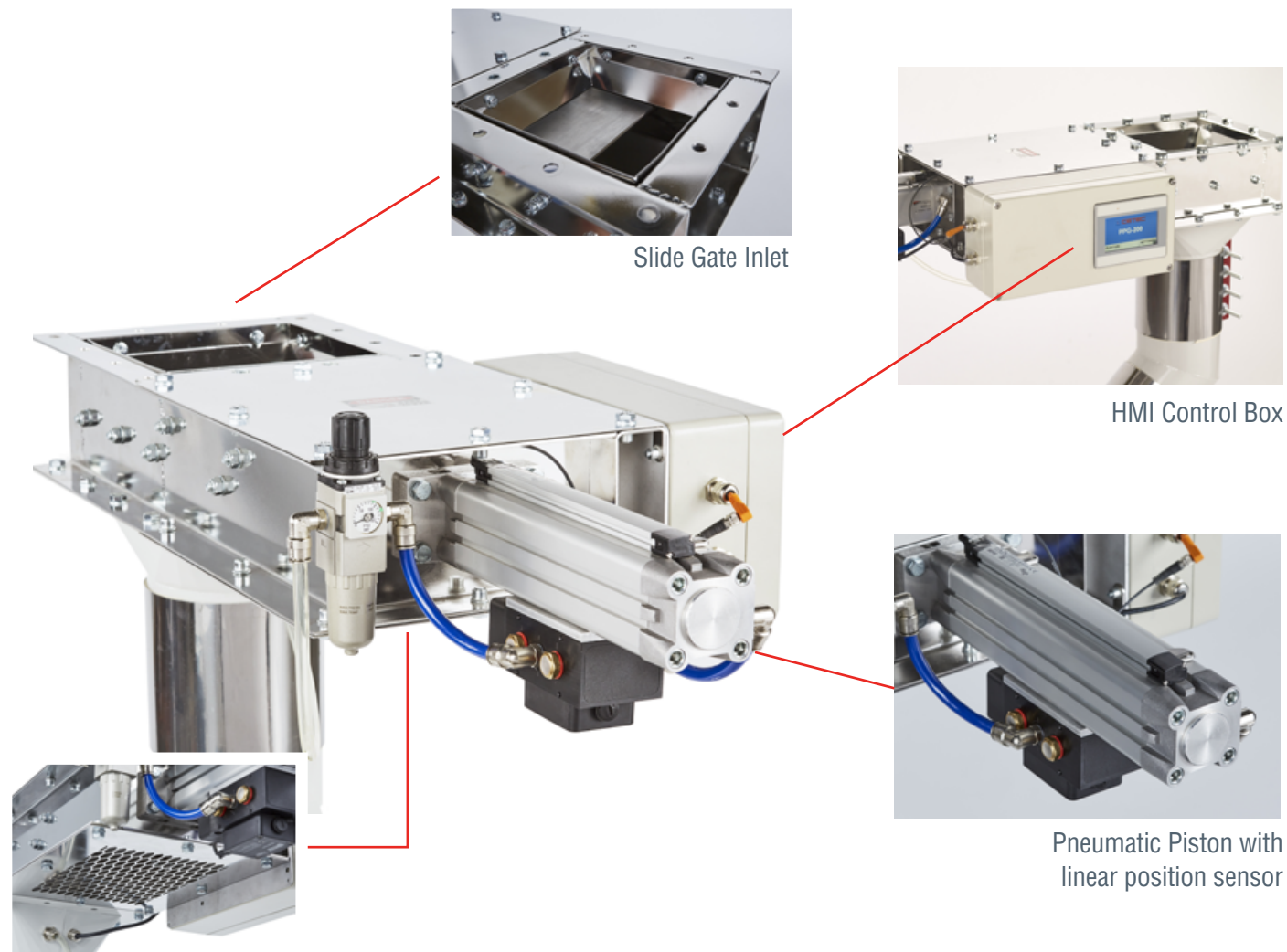
# PPG SLIDE GATE



MOD.	CAP. (TPH) (WHEAT)	ALL DIMENSIONS IN MILLIMETERS					(KG.)
		A	B	C	D	E	DEAD WT.
PPG200	1 – 50	120	200	280	914	627	34
PPG300	5 – 200	150	300	420	1370	940	49

ALL DATA SHOWN IS PURELY INDICATIVE, AND MAY VARY AT SUPPLIER'S DISCRETION DUE TO DESIGN VARIABLES OR MACHINE DESIGN UPDATES.  
CUSTOMIZED SIZES AND HIGHER CAPACITIES AVAILABLE UPON REQUEST

## Why the CETEC PPG SLIDE GATE?



PPG Slide Gates are used to meter (or cut off) the flow of free flowing powders or granulates in accurate repeatable percentage increments, permitting accurate volumetric blending of these products. Their rugged construction makes them ideally suited for heavy-duty applications in diverse industries, including grain processing, plastics, seed handling, etc.

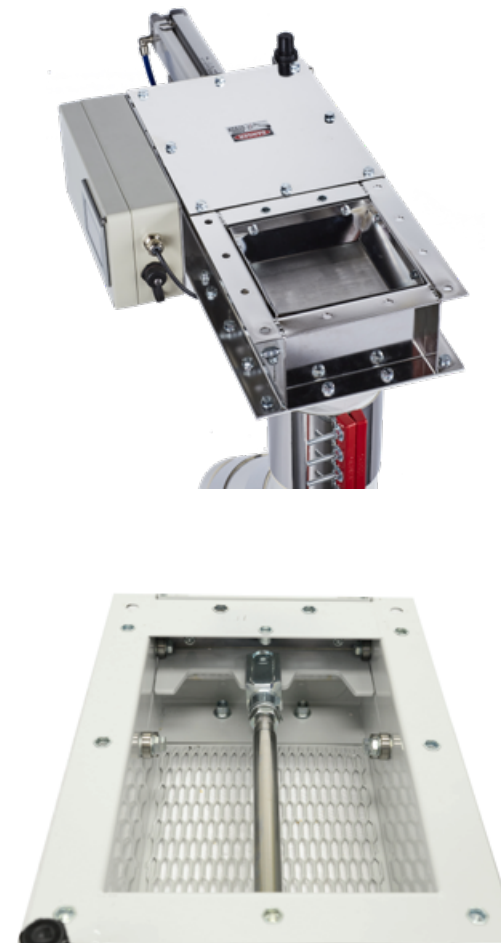
To ensure sanitary operation in food plants, and best protection of the valve, the blade is equipped with a double seal. PPG Slide Gates are available with a pneumatic actuator system. The gates can be ordered in powder coated carbon steel (finish light grey color, RAL 7035), or in stainless steel.

Constant volumetric metering system for free-flowing products:

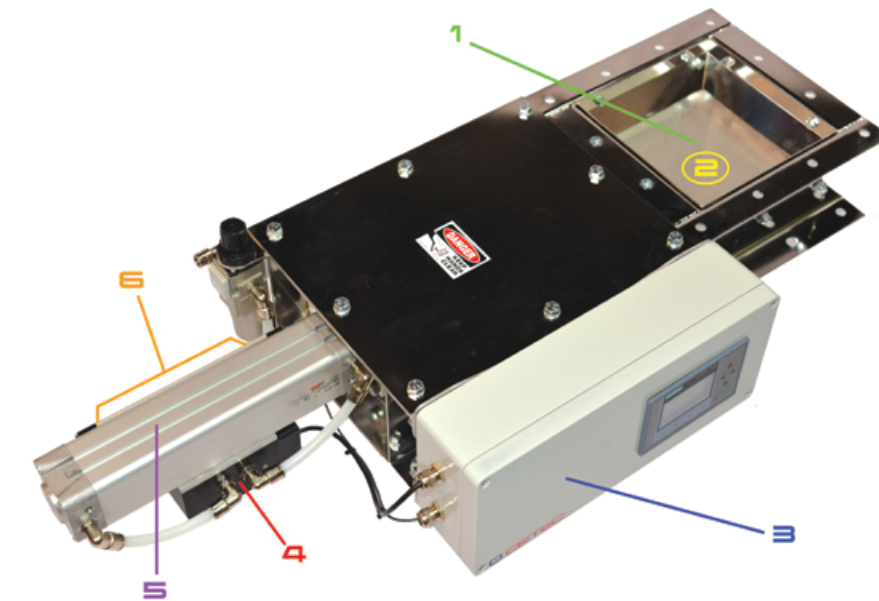
- for continuous volumetric blending
- for volumetric addition of ingredients
- for attaining volumetric target quantities and throughputs

With maximum accuracy and distinctive product quality advantages within your production processes.

## Operation.



The PPG is attached either directly or by means of spouting to a bin or hopper. The product is fed from the bin or hopper to the inlet (1). A pneumatically controlled slide gate (2) meters the stream of product at the slide opening selected, expressed as a percentage. The on board electronics (3) monitors and controls the slide position with the aid of the (patented) control valve (4) through the pneumatic cylinder (5). The current slide position is registered by a linear position sensor (6), which transmits it to the on board controller. The required slide position is specified directly at the unit, or by remote control through a process control system using an appropriate serial or analog (option) interface signal.



## Benefits & Features.

- Low overall height.
- Slide gap adjustment accurate to percentage points.
- Excellent repeatability of the slide position selected.
- Easy-to-use control system.
- Integrated monitoring, text and alarm functions for:
  - Pneumatic system (control valves, cylinders, etc.)
  - Slide position
  - Detection of slide jamming by foreign objects
- Automatic zero-point correction after each closing operation.
- Selection of operating mode:
  - Local operator terminal
  - Plant control system
  - Analog PLC 0-10v or /4...20mA
  - Profibus DP
- Excellent operating reliability.
- Easy, versatile installation.
- Can be combined with product inlet and outlet adapters to suit gravity spouting with nominal widths of 200 mm (8") or 300 mm (10") (square or circular) and outlet components suiting various drag or screw conveyors, or any other custom adapters.
- Approval: NEMA 12, ATEX Zone22; II 3D EEx C 100°C.